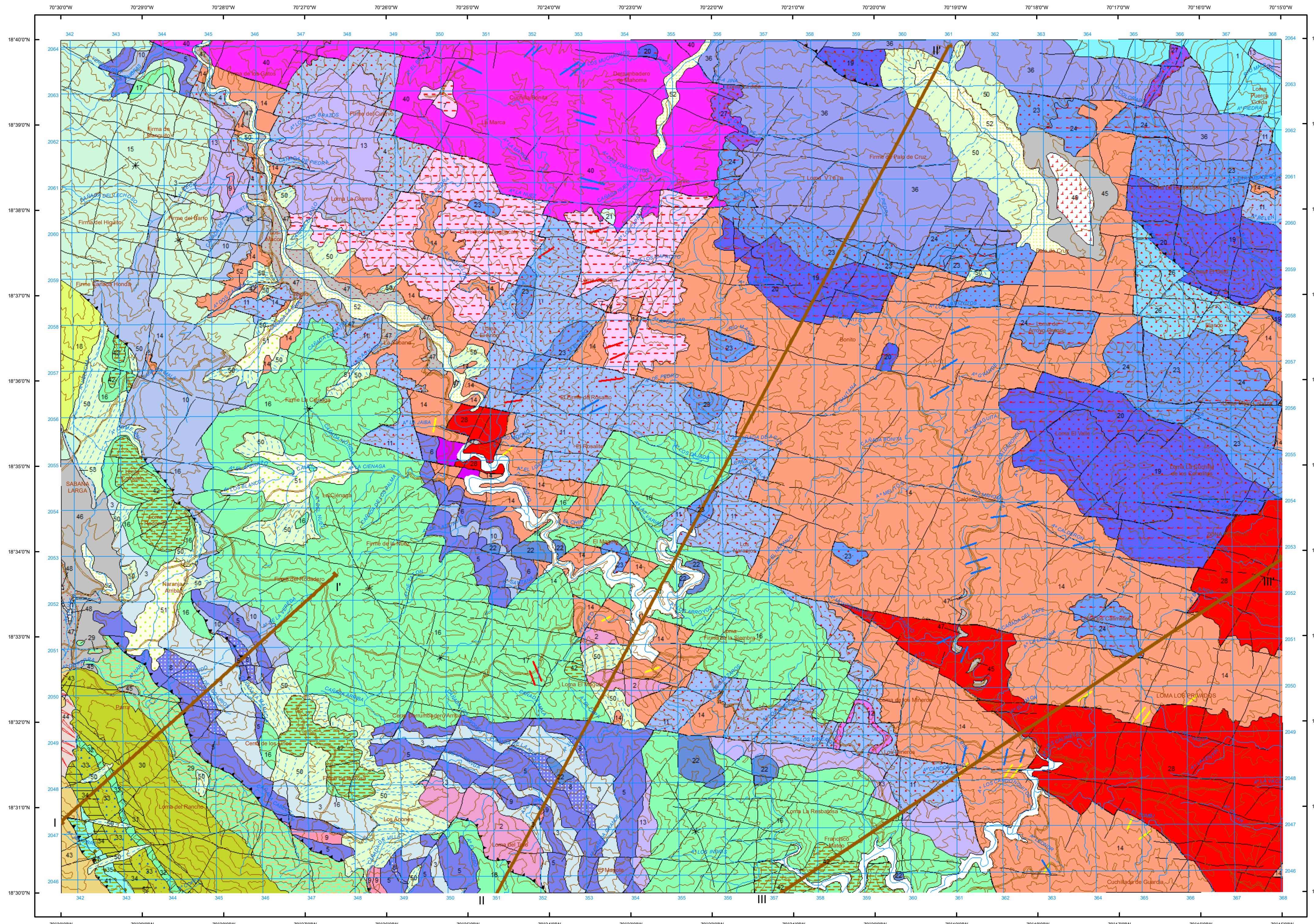


**LEYENDA**

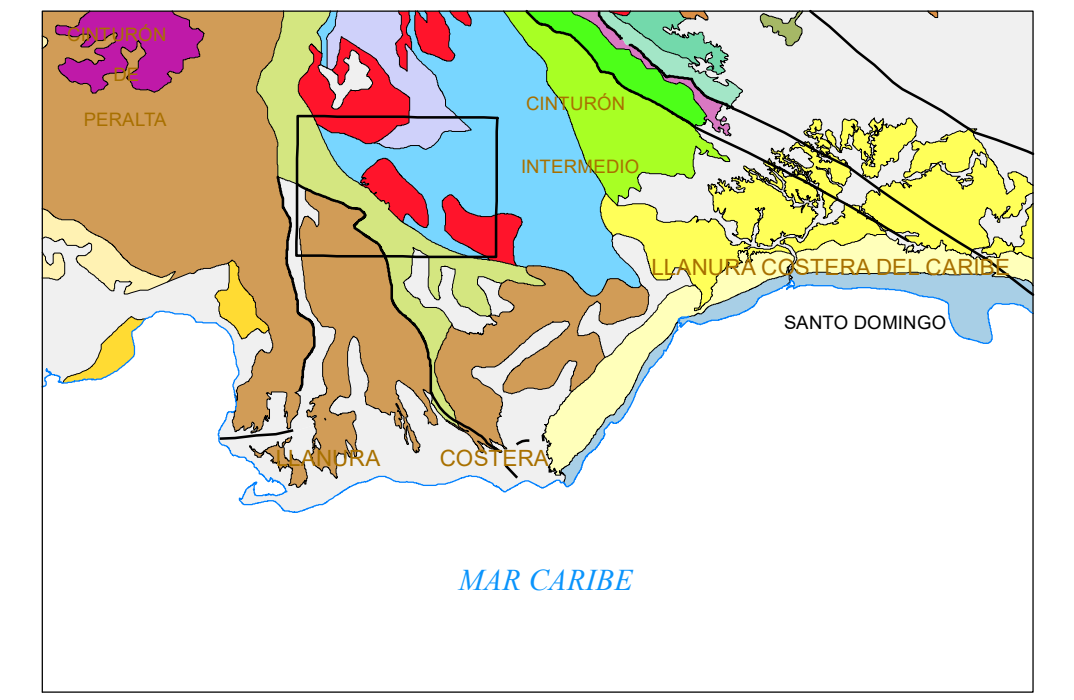
CUATERNARIO	Holoceno	47, 51, 52, 53, 48, 49, 50	53 Fondos de valle (depósitos localmente discontinuos), bloques, cantos, arenas y gravas
	Pleistoceno	45, 44	52 Aluviones, depósitos del río: Arenas, gravas, cantos y limos
TERCIARIO	Mioceno	43	51 Coluviones
		40, 42	50 Cono aluvial, deslizamiento
CRETÁCICO	Maastrichtiano	36, 37, 38, 39, 40, 41, 42	49 Pantano, formaciones humosas
		35, 36, 37, 38, 39, 40, 41, 42	48 Llanura de inundación. Limos con niveles de cantos, arenas y gravas
CRETÁCICO	Campaniano	25, 26, 27, 28, 29, 30, 31, 32, 33, 34	47 Terraza baja: Cantos, gravas, arenas, limos
		22, 23, 24, 25, 26, 27, 28, 29, 30, 31, 32, 33, 34	46 Terraza media-alta: Cantos, gravas y arenas
CRETÁCICO	Santoniano	19, 20, 21, 22, 23, 24, 25, 26, 27, 28, 29, 30, 31, 32, 33, 34	45 Terraza alta: Cantos, gravas, arenas, limos
		16, 17, 18, 19, 20, 21, 22, 23, 24, 25, 26, 27, 28, 29, 30, 31, 32, 33, 34	44 Cauce: Arenas y arenas limosas con niveles de cantos y gravas
CRETÁCICO	Turoniano	13, 14, 15, 16, 17, 18, 19, 20, 21, 22, 23, 24, 25, 26, 27, 28, 29, 30, 31, 32, 33, 34	43 Fm. Caca indiferenciada: Margas y fangos, generalmente arenosos, con intercalaciones de areniscas turbidíticas, cantos polimíticos dispersos, bloques y olistolitos de origen diverso; frecuente aspecto calcáreo
		9, 10, 11, 12, 13, 14, 15, 16, 17, 18, 19, 20, 21, 22, 23, 24, 25, 26, 27, 28, 29, 30, 31, 32, 33, 34	42 Fm. Loma Rodríguez: Caliza estratificada, en parte margosa, de colores crema y rosada; facies de plataforma
CRETÁCICO	Cenozoico	3, 4, 5, 6, 7, 8, 9, 10, 11, 12, 13, 14, 15, 16, 17, 18, 19, 20, 21, 22, 23, 24, 25, 26, 27, 28, 29, 30, 31, 32, 33, 34	41 Fm. El Número: Caliza pelágica de color blanco con lentas de pedernal
		1, 2, 3, 4, 5, 6, 7, 8, 9, 10, 11, 12, 13, 14, 15, 16, 17, 18, 19, 20, 21, 22, 23, 24, 25, 26, 27, 28, 29, 30, 31, 32, 33, 34	40 Tonalitas no foliadas
CRETÁCICO	Inferior	1, 2, 3, 4, 5, 6, 7, 8, 9, 10, 11, 12, 13, 14, 15, 16, 17, 18, 19, 20, 21, 22, 23, 24, 25, 26, 27, 28, 29, 30, 31, 32, 33, 34	39 Ocurrencia frecuente de diques tonalíticos
		1, 2, 3, 4, 5, 6, 7, 8, 9, 10, 11, 12, 13, 14, 15, 16, 17, 18, 19, 20, 21, 22, 23, 24, 25, 26, 27, 28, 29, 30, 31, 32, 33, 34	38 Ocurrencia frecuente de diques graníticos
CRETÁCICO	Superior	1, 2, 3, 4, 5, 6, 7, 8, 9, 10, 11, 12, 13, 14, 15, 16, 17, 18, 19, 20, 21, 22, 23, 24, 25, 26, 27, 28, 29, 30, 31, 32, 33, 34	37 Ocurrencia frecuente de diques básicos
		1, 2, 3, 4, 5, 6, 7, 8, 9, 10, 11, 12, 13, 14, 15, 16, 17, 18, 19, 20, 21, 22, 23, 24, 25, 26, 27, 28, 29, 30, 31, 32, 33, 34	36 Gabros y Gabronolitas de la Yagüta
CRETÁCICO	Superior	1, 2, 3, 4, 5, 6, 7, 8, 9, 10, 11, 12, 13, 14, 15, 16, 17, 18, 19, 20, 21, 22, 23, 24, 25, 26, 27, 28, 29, 30, 31, 32, 33, 34	35 Fm. Los Martínez: Alternancia de arenisca, limos y margas; presencia local de olistolitos
		1, 2, 3, 4, 5, 6, 7, 8, 9, 10, 11, 12, 13, 14, 15, 16, 17, 18, 19, 20, 21, 22, 23, 24, 25, 26, 27, 28, 29, 30, 31, 32, 33, 34	34 Fm. Los Martínez: Margas con intercalaciones de calcarenitas
CRETÁCICO	Superior	1, 2, 3, 4, 5, 6, 7, 8, 9, 10, 11, 12, 13, 14, 15, 16, 17, 18, 19, 20, 21, 22, 23, 24, 25, 26, 27, 28, 29, 30, 31, 32, 33, 34	33 Fm. Los Martínez: Conglomerado polimítico con predominancia de clastos de caliza, en alternancia con arenisca
		1, 2, 3, 4, 5, 6, 7, 8, 9, 10, 11, 12, 13, 14, 15, 16, 17, 18, 19, 20, 21, 22, 23, 24, 25, 26, 27, 28, 29, 30, 31, 32, 33, 34	32 Fm. Los Martínez: Alternancia de arenisca gruesa, arenisca, limos y margas con limo con estratos esporádicos de caliza oscura
CRETÁCICO	Superior	1, 2, 3, 4, 5, 6, 7, 8, 9, 10, 11, 12, 13, 14, 15, 16, 17, 18, 19, 20, 21, 22, 23, 24, 25, 26, 27, 28, 29, 30, 31, 32, 33, 34	31 Fm. Los Martínez: Conglomerado polimítico con intercalaciones de arenisca gruesa y arenisca
		1, 2, 3, 4, 5, 6, 7, 8, 9, 10, 11, 12, 13, 14, 15, 16, 17, 18, 19, 20, 21, 22, 23, 24, 25, 26, 27, 28, 29, 30, 31, 32, 33, 34	30 Fm. El Manicador: Caliza pelágica de color blanco, rojo y gris oscuro con capas de margas calcáreas; presencia local de pedernal
CRETÁCICO	Superior	1, 2, 3, 4, 5, 6, 7, 8, 9, 10, 11, 12, 13, 14, 15, 16, 17, 18, 19, 20, 21, 22, 23, 24, 25, 26, 27, 28, 29, 30, 31, 32, 33, 34	29 Fm. El Manicador: Caliza pelágica de color blanco, rojo y gris oscuro con capas de margas calcáreas; presencia local de pedernal
		1, 2, 3, 4, 5, 6, 7, 8, 9, 10, 11, 12, 13, 14, 15, 16, 17, 18, 19, 20, 21, 22, 23, 24, 25, 26, 27, 28, 29, 30, 31, 32, 33, 34	28 Granito, granodiorita
CRETÁCICO	Superior	1, 2, 3, 4, 5, 6, 7, 8, 9, 10, 11, 12, 13, 14, 15, 16, 17, 18, 19, 20, 21, 22, 23, 24, 25, 26, 27, 28, 29, 30, 31, 32, 33, 34	27 Norita cuarcifera, migmatizada
		1, 2, 3, 4, 5, 6, 7, 8, 9, 10, 11, 12, 13, 14, 15, 16, 17, 18, 19, 20, 21, 22, 23, 24, 25, 26, 27, 28, 29, 30, 31, 32, 33, 34	26 Norita cuarcifera, con metamorfismo de contacto
CRETÁCICO	Superior	1, 2, 3, 4, 5, 6, 7, 8, 9, 10, 11, 12, 13, 14, 15, 16, 17, 18, 19, 20, 21, 22, 23, 24, 25, 26, 27, 28, 29, 30, 31, 32, 33, 34	25 Norita cuarcifera
		1, 2, 3, 4, 5, 6, 7, 8, 9, 10, 11, 12, 13, 14, 15, 16, 17, 18, 19, 20, 21, 22, 23, 24, 25, 26, 27, 28, 29, 30, 31, 32, 33, 34	24 Gabro, migmatizado
CRETÁCICO	Superior	1, 2, 3, 4, 5, 6, 7, 8, 9, 10, 11, 12, 13, 14, 15, 16, 17, 18, 19, 20, 21, 22, 23, 24, 25, 26, 27, 28, 29, 30, 31, 32, 33, 34	23 Gabro, con metamorfismo de contacto
		1, 2, 3, 4, 5, 6, 7, 8, 9, 10, 11, 12, 13, 14, 15, 16, 17, 18, 19, 20, 21, 22, 23, 24, 25, 26, 27, 28, 29, 30, 31, 32, 33, 34	22 Gabros
CRETÁCICO	Superior	1, 2, 3, 4, 5, 6, 7, 8, 9, 10, 11, 12, 13, 14, 15, 16, 17, 18, 19, 20, 21, 22, 23, 24, 25, 26, 27, 28, 29, 30, 31, 32, 33, 34	21 Rocas ultrabásicas, migmatizadas
		1, 2, 3, 4, 5, 6, 7, 8, 9, 10, 11, 12, 13, 14, 15, 16, 17, 18, 19, 20, 21, 22, 23, 24, 25, 26, 27, 28, 29, 30, 31, 32, 33, 34	20 Proximita feldespática, migmatizada
CRETÁCICO	Superior	1, 2, 3, 4, 5, 6, 7, 8, 9, 10, 11, 12, 13, 14, 15, 16, 17, 18, 19, 20, 21, 22, 23, 24, 25, 26, 27, 28, 29, 30, 31, 32, 33, 34	19 Proximita feldespática, con metamorfismo de contacto
		1, 2, 3, 4, 5, 6, 7, 8, 9, 10, 11, 12, 13, 14, 15, 16, 17, 18, 19, 20, 21, 22, 23, 24, 25, 26, 27, 28, 29, 30, 31, 32, 33, 34	18 Fm. Tico: Alternancia decrómica de tobas ceníticas (con niveles de chert), margas, calizas margosas y areniscas
CRETÁCICO	Superior	1, 2, 3, 4, 5, 6, 7, 8, 9, 10, 11, 12, 13, 14, 15, 16, 17, 18, 19, 20, 21, 22, 23, 24, 25, 26, 27, 28, 29, 30, 31, 32, 33, 34	17 Fm. Tico: Rocas proclásticas básicas: Estratos de bombas volcánicas
		1, 2, 3, 4, 5, 6, 7, 8, 9, 10, 11, 12, 13, 14, 15, 16, 17, 18, 19, 20, 21, 22, 23, 24, 25, 26, 27, 28, 29, 30, 31, 32, 33, 34	16 Fm. Tico: Rocas proclásticas de carácter básico-intermedio con lavas básicas en menor proporción
CRETÁCICO	Superior	1, 2, 3, 4, 5, 6, 7, 8, 9, 10, 11, 12, 13, 14, 15, 16, 17, 18, 19, 20, 21, 22, 23, 24, 25, 26, 27, 28, 29, 30, 31, 32, 33, 34	15 Fm. Tico: Rocas volcánicas masivas o estratificadas con intercalaciones subordinadas de cotadas y calizas
		1, 2, 3, 4, 5, 6, 7, 8, 9, 10, 11, 12, 13, 14, 15, 16, 17, 18, 19, 20, 21, 22, 23, 24, 25, 26, 27, 28, 29, 30, 31, 32, 33, 34	14 Tonallita
CRETÁCICO	Superior	1, 2, 3, 4, 5, 6, 7, 8, 9, 10, 11, 12, 13, 14, 15, 16, 17, 18, 19, 20, 21, 22, 23, 24, 25, 26, 27, 28, 29, 30, 31, 32, 33, 34	13 Fm. Río Duey: Rocas proclásticas y tufas de carácter intermedario
		1, 2, 3, 4, 5, 6, 7, 8, 9, 10, 11, 12, 13, 14, 15, 16, 17, 18, 19, 20, 21, 22, 23, 24, 25, 26, 27, 28, 29, 30, 31, 32, 33, 34	12 Fm. Arroyo Jigüey: Lavas ultramáficas, con metamorfismo de contacto
CRETÁCICO	Superior	1, 2, 3, 4, 5, 6, 7, 8, 9, 10, 11, 12, 13, 14, 15, 16, 17, 18, 19, 20, 21, 22, 23, 24, 25, 26, 27, 28, 29, 30, 31, 32, 33, 34	11 Fm. Arroyo Jigüey: Rocas volcánicas, indiferenciadas con metamorfismo de contacto
		1, 2, 3, 4, 5, 6, 7, 8, 9, 10, 11, 12, 13, 14, 15, 16, 17, 18, 19, 20, 21, 22, 23, 24, 25, 26, 27, 28, 29, 30, 31, 32, 33, 34	10 Fm. Arroyo Jigüey: Rocas volcánicas masivas, de carácter básico-intermedio, indiferenciadas, con capas de chert y calizas
CRETÁCICO	Superior	1, 2, 3, 4, 5, 6, 7, 8, 9, 10, 11, 12, 13, 14, 15, 16, 17, 18, 19, 20, 21, 22, 23, 24, 25, 26, 27, 28, 29, 30, 31, 32, 33, 34	9 Fm. Arroyo Jigüey: Lavas ultramáficas
		1, 2, 3, 4, 5, 6, 7, 8, 9, 10, 11, 12, 13, 14, 15, 16, 17, 18, 19, 20, 21, 22, 23, 24, 25, 26, 27, 28, 29, 30, 31, 32, 33, 34	8 Fm. Arroyo Jigüey: Basalto xenolítico, con inclusiones de basalto, riolita, calizas y chert
CRETÁCICO	Superior	1, 2, 3, 4, 5, 6, 7, 8, 9, 10, 11, 12, 13, 14, 15, 16, 17, 18, 19, 20, 21, 22, 23, 24, 25, 26, 27, 28, 29, 30, 31, 32, 33, 34	7 Fm. Arroyo Jigüey: Rocas volcánicas migmatizadas
		1, 2, 3, 4, 5, 6, 7, 8, 9, 10, 11, 12, 13, 14, 15, 16, 17, 18, 19, 20, 21, 22, 23, 24, 25, 26, 27, 28, 29, 30, 31, 32, 33, 34	6 Fm. Arroyo Jigüey: Basalto con metamorfismo de contacto
CRETÁCICO	Superior	1, 2, 3, 4, 5, 6, 7, 8, 9, 10, 11, 12, 13, 14, 15, 16, 17, 18, 19, 20, 21, 22, 23, 24, 25, 26, 27, 28, 29, 30, 31, 32, 33, 34	5 Fm. Arroyo Jigüey: Lavas basálticas
		1, 2, 3, 4, 5, 6, 7, 8, 9, 10, 11, 12, 13, 14, 15, 16, 17, 18, 19, 20, 21, 22, 23, 24, 25, 26, 27, 28, 29, 30, 31, 32, 33, 34	4 Fm. Arroyo Jigüey: Rocas volcánicas masivas, intermedias-ácidas, con metamorfismo de contacto
CRETÁCICO	Superior	1, 2, 3, 4, 5, 6, 7, 8, 9, 10, 11, 12, 13, 14, 15, 16, 17, 18, 19, 20, 21, 22, 23, 24, 25, 26, 27, 28, 29, 30, 31, 32, 33, 34	3 Fm. Arroyo Jigüey: Rocas volcánicas masivas, intermedias-ácidas, con lentas y capas de chert y caliza
		1, 2, 3, 4, 5, 6, 7, 8, 9, 10, 11, 12, 13, 14, 15, 16, 17, 18, 19, 20, 21, 22, 23, 24, 25, 26, 27, 28, 29, 30, 31, 32, 33, 34	2 Fm. Duarte: Rocas volcánicas ultramáficas-máficas, predominancia de basalto
CRETÁCICO	Superior	1, 2, 3, 4, 5, 6, 7, 8, 9, 10, 11, 12, 13, 14, 15, 16, 17, 18, 19, 20, 21, 22, 23, 24, 25, 26, 27, 28, 29, 30, 31, 32, 33, 34	1 Complejo Duarte: Esquistos máficos (facies de los esquistos y subesquistos verdes) y localmente, metadiabásas



Proyección y Cuadrícula U.T.M. - Huso 19  
Escala vertical de las curvas de nivel: 10 metros  
Adaptación y base: Mapa Topográfico 1:50.000  
Bases topográficas proporcionadas por la Secretaría de Estado de Medioambiente

Servicio Geológico Nacional (SGN)  
Trabajo de actualización Octubre 2000  
Juan Rodríguez (SGN)  
Kenny Aguirre (SGN)  
Freddy Durán (SGN)  
Trabajo Cartográfico Francisco Menéndez (SGN)

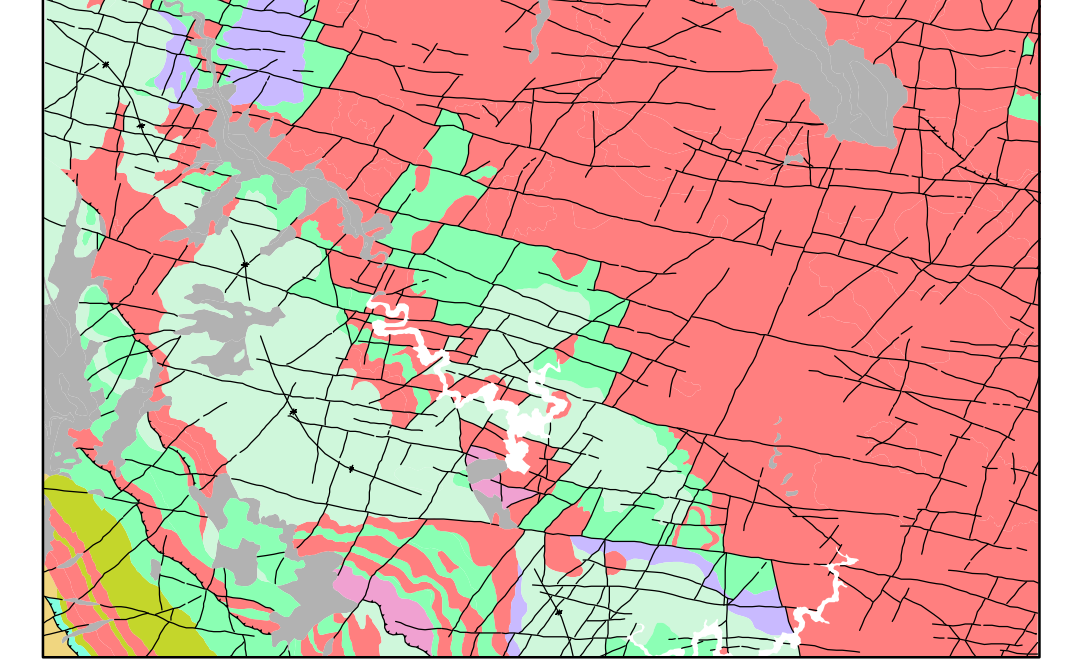
**ESQUEMA REGIONAL**



Escala 1:1.000.000

Quaternario indiferenciado	Fm. Paso Viejo Norte: Cretácico Inferior (Cordillera Oriental)
Quaternario cuaternario	Deposito de Tora Rivera-Pereira, Cretácico Superior-Mioceno (Cordillera Central)
Quaternario pleistoceno	Fm. La Isabela: Calizas arenolíticas
Fm. La Isabela: Calizas arenolíticas	Fm. Tico: Cretácico Superior (Cordillera Central)
Rellevo de las cordilleras del Cibao	Fm. Sierra Cabezas y Pinarillo Sur: Cretácico Superior (Cordillera Central)
Rellevo de las cordilleras del Cibao	Complejo Río Viejo: Cretácico Inferior (Cordillera Central)
Rellevo de las cordilleras del Cibao	Complejo Duarte: Jurásico Superior (Cord. Central)
Rellevo de las cordilleras del Cibao	Esquistos de Maimón (Cordillera Central)
Rellevo de las cordilleras del Cibao	Tonallitas y diques
Rellevo de las cordilleras del Cibao	Gabros y diábras
Rellevo de las cordilleras del Cibao	Pedregales y serpentinas

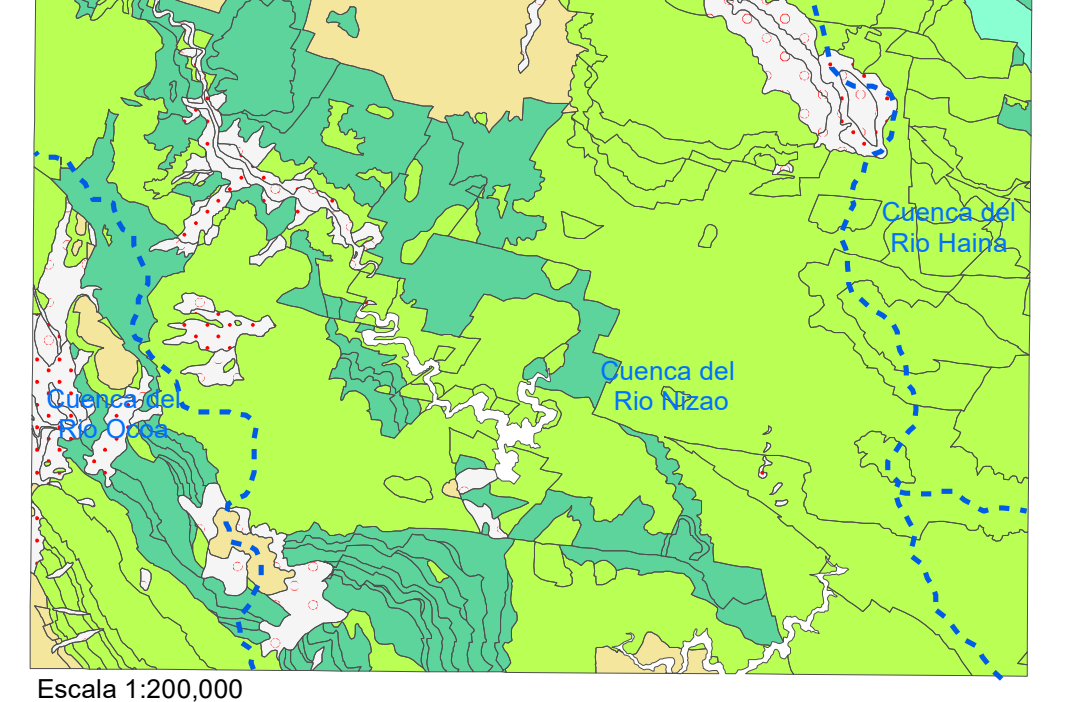
**ESQUEMA TECTÓNICO**



Escala 1:200.000

Fondos de valle, aluviones, coluviones, cono aluvial, pedernal, Llanura de inundación, lentas, glicis	Fm. El Manicador: Caliza pelágica
Fm. Duarte: Alternancia de arenisca, limo y margas; presencia local de olistolitos	Fm. Tico: Rocas proclásticas básicas, rocas proclásticas de carácter básico-intermedio con lavas básicas en menor proporción
Fm. Río Duey: Rocas proclásticas y tufas de carácter intermedario	Fm. Río Duey: Margas y fangos, areniscas turbidíticas, cantos polimíticos dispersos, bloques y olistolitos de origen diverso
Fm. Arroyo Jigüey: Lavas ultramáficas, con metamorfismo de contacto	Fm. Loma Rodríguez: Caliza estratificada
Fm. Arroyo Jigüey: Rocas volcánicas migmatizadas	Fm. El Número: Caliza pelágica
Fm. Arroyo Jigüey: Basalto con metamorfismo de contacto	Fm. Los Martínez: Alternancia de arenisca, limo y margas; presencia local de olistolitos
Fm. Arroyo Jigüey: Lavas basálticas	Fm. Duarte: Rocas volcánicas ultramáficas-máficas
Fm. Arroyo Jigüey: Rocas volcánicas masivas, intermedias-ácidas, con metamorfismo de contacto	
Fm. Arroyo Jigüey: Rocas volcánicas masivas, intermedias-ácidas, con lentas y capas de chert y caliza	
Fm. Duarte: Rocas volcánicas ultramáficas-máficas, predominancia de basalto	
Complejo Duarte: Esquistos máficos (facies de los esquistos y subesquistos verdes) y localmente, metadiabásas	

**ESQUEMA HIDROGEOLOGICO**



**CUATERNARIO**

Permeabilidad alta por porosidad intergranular: Aluviones coluviales, aluviones y tufos con cantos.
Permeabilidad media a baja: Turberas, pantanos, formaciones humosas y glicis.

**TERCIARIO**

Permeabilidad baja a muy baja: Tonallitas no foliadas, margas, fangos, areniscas turbidíticas, cantos de conglomerados polimíticos, caliza estratificada y caliza pelágica.
---

**CRETÁCICO**

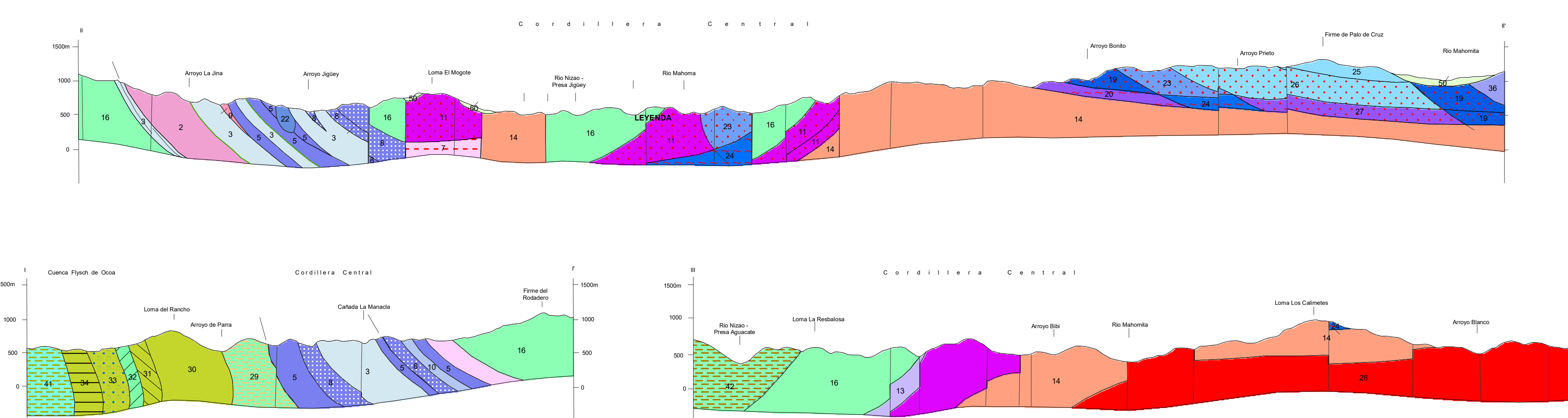
Permeabilidad baja a muy baja: Rocas volcánicas masivas, rocas proclásticas (Mafas), lavas ultramáficas y basálticas, rocas volcánicas masivas, basaltos xenolíticos, rocas volcánicas migmatizadas.
Permeabilidad baja: Ocurrencia frecuente de diques tonalíticos, graníticos de carácter básicos, glicis, granodioritas, alternancia de areniscas, limos, margas, conglomerado polimítico, calizas pelágicas, granito, granodiorita, tonallita, rocas ultramáficas y norita.

**JURÁSICO**

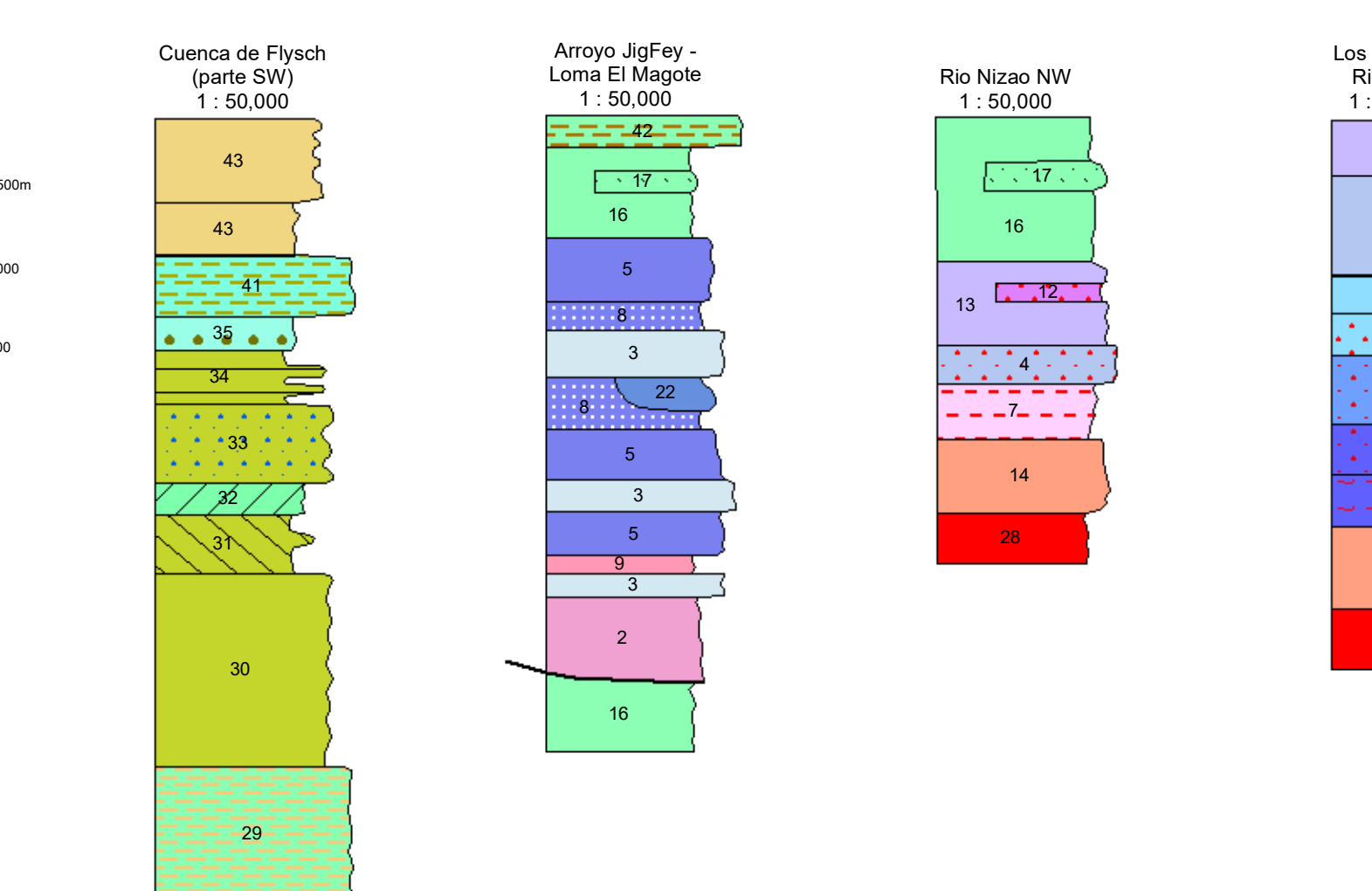
Permeabilidad baja a muy baja: Esquistos máficos y metadiabásas.
--

**SECCIONES GEOLÓGICAS**

ESCALA VERTICAL Y HORIZONTAL 1:50.000



**COLUMNAS LITOESTRATIGRAFICAS**



**MAPA ÍNDICE**

